

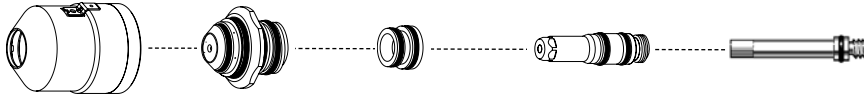
# Hypertherm®

## HyDefinition® HD4070\*



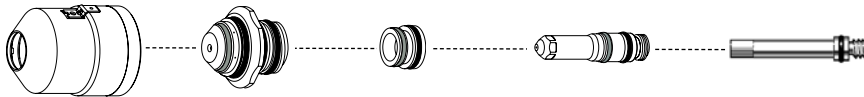
### Consumables

#### Mild steel



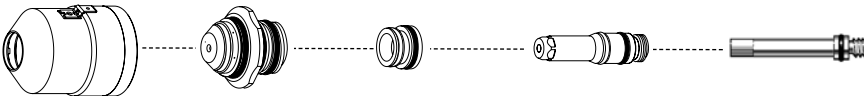
	Shield cap*	Nozzle	Swirl ring	Electrode	Water tube
<b>30 A</b>	120786	120678	120677	120676	120025
<b>70 A</b>	120786	120685	120684	120683	120025
<b>100 A</b>	120786	120660	120655	120654	120025
<b>200 A</b>	120786	120692	120691	120690	120025
		220081 (ccw)	220080 (ccw)		

#### Stainless steel



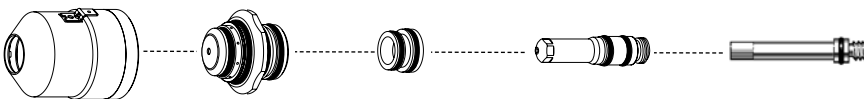
	Shield cap*	Nozzle	Swirl ring	Electrode	Water tube
<b>45 A</b>	120786	120706	120705	120704	120025
<b>70 A</b>	120786	120713	120712	120711	120025
<b>100 A</b>	120786	120720	120719	120718	120025
<b>200 A</b>	120786	120727	120726	120725	120025

#### Aluminum



	Shield cap*	Nozzle	Swirl ring	Electrode	Water tube
<b>45 A</b>	120786	120741	120740	120739	120025
<b>70 A</b>	120786	120748	120747	120746	120025
<b>100 A</b>	120786	120755	120754	120753	120025
<b>200 A</b>	120786	120762	120761	120760	120025

#### Marking



	Shield cap*	Nozzle	Swirl ring	Electrode	Water tube
	120786	120671	120670	120669	120025



#### TECHNOLOGIES

**Chambered swirl ring™**

**HyLife®**

**SilverPlus®**

**Vented shield™**

\* 120907 with IHS tab

# HyDefinition® HD4070®

## Torch assembly options

### Torch assembly

Description	Part number
Torch with 6' (2 m) leads	128500
Torch with 10' (3 m) leads	128501
Torch with 15' (4.5 m) leads	128502

### Torch

Description	Part number
Standard	120651

### Additional parts available (not shown)

Description	Part number
Preventative maintenance kit (Torch, o-ring kit, o-rings, coolant, coolant filter, contactor, and relay)	228013
Electrode pit depth gauge	004147
Electrode removal tool	027102
Consumables removal tool	004663
Water tube removal tool	027347
Silicon lubricant for o-rings	027055



HyDefinition  
HD4070 torch